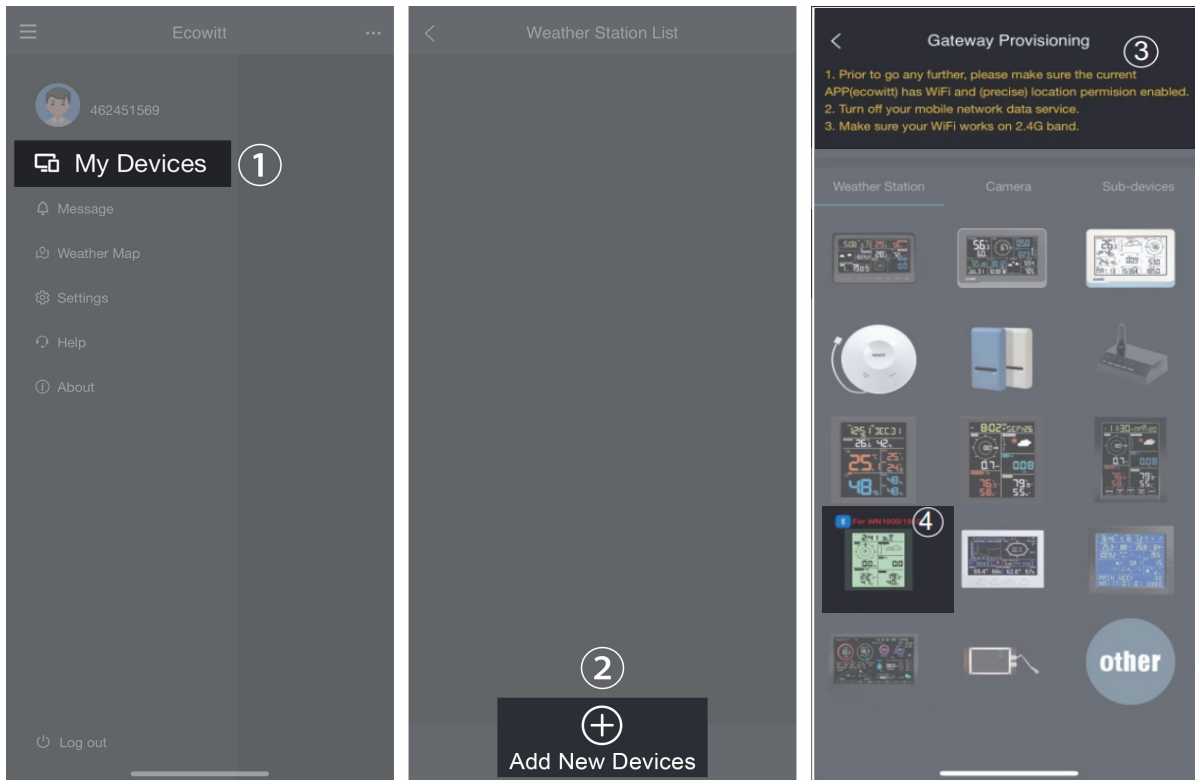


Quick Start Guide

Generic Gateway/Console/Hub Configuration

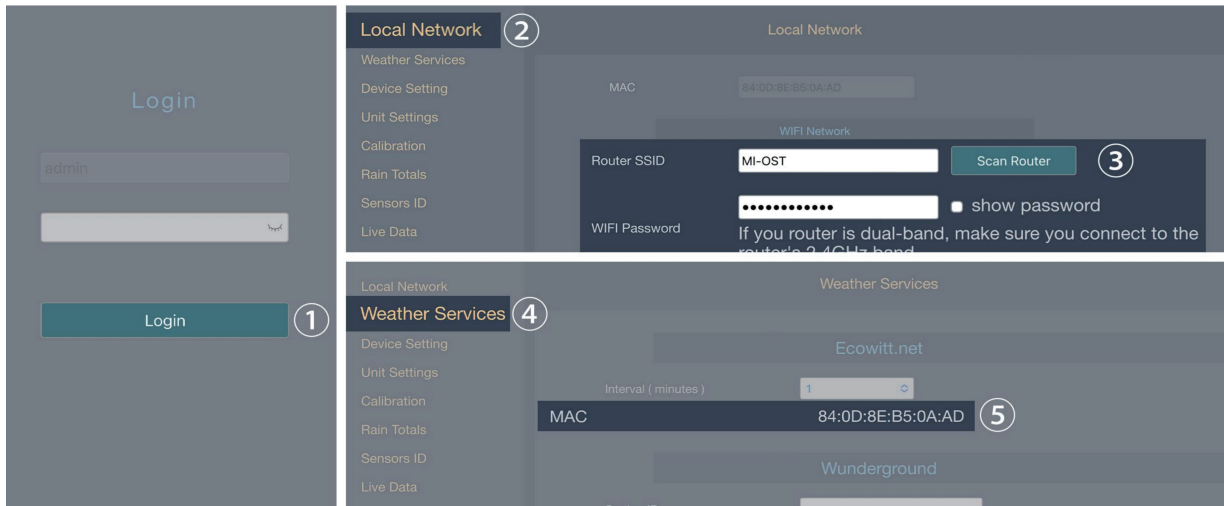


1. Install the "ecowitt" APP. Make sure you have the app with location and Wi-Fi services enabled.
2. Disable the cellular network data service on your mobile phone during the setup process (if you are using a mobile phone to run the ecowitt app).
3. Tap "menu" at the top left corner, then go to "weather station," and select "+ add a new weather station" to initiate the Wi-Fi provisioning process.
4. Follow the instructions provided by the app, and if you encounter any issues, please contact our customer service department.

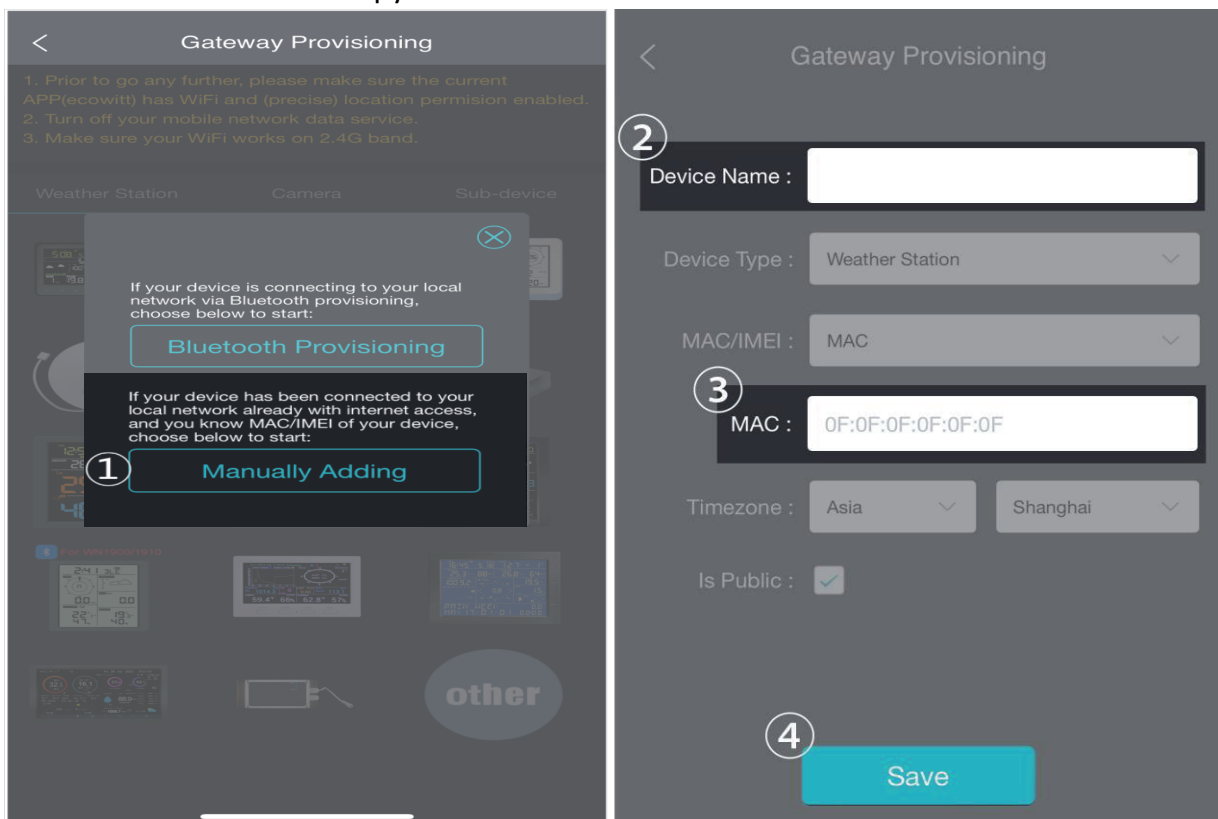
If you are unable to configure the device network settings using the mobile app, we recommend using the SETUP Via Embedded Web page on next page.

SETUP Via Embedded Webpage

1. Activating configuration mode on weather station.(If you don't know how to Activate , please reading on APP page Wi-Fi provisioning.)
2. Use your mobile phone to connect to the Wi-Fi hot spot from your weather station.



3. Go to your mobile phone browser, enter 192.168.4.1 to open the embedded web page.(The default password is empty, tap Login directly.)
4. Local Network -> Router SSID -> WIFI password -> Apply
5. Weather services -> Copy "MAC"



6. Return "Gateway provisioning" to choose "Manually adding" on mobile app. And then enter "Device Name" and paste "MAC" to save.